

# WBB-5800

## 5 GHZ BROADBAND BRIDGE

### 900 MBPS

High performance

### 10 KM

15dBi antenna

### SECURE

AES encryption

### INDUSTRIAL

Outdoor grade

### PLUG & PLAY

Easy deployment

## Introduction

**WBB-5890** is broadband wireless bridges over the 5 GHz license-free band that deliver up to 900 Mbps of Ethernet bandwidth.

It provides point-to-point wireless bridge over 10 or 5 km with easy installation and short time to operation.

**WBB-5800** are industrial products designed for outdoor operation. They serve various requirements such as video-surveillance, traffic control, utility, backhaul, building to building, harbours, warehouse and logistics, etc.

They ensure secure communications thanks to strong AES encryption over the radio link, authentication and VLAN management.

**WBB-5800** are very easy to operate thanks to push-buttons and Led display to avoid laptop for installation and user friendly web interface that provides clear connection and radio monitoring and access to advanced settings. They supports various modes of operation for point-to-point and point-to-multipoint topologies.

**WBB-5800** have a very nice and discreet design that fit perfectly in public places.

## Applications

WBB-5800 serves many applications that require an Ethernet connection between two systems over the air:

- Connection of IP cameras and video-protection networks
- Building interconnection: harbours, warehouse, factory, parking, airport, schools, etc.
- Connection to industry specific devices: intelligent traffic systems, signalling, metering and monitoring in transportation or utility networks; etc.



## Applications

### Point to Multipoint

**WBB-5890** are very often used for medium to long distance video-surveillance applications. They support point-to-point and point-to-multipoint topologies with high gain antenna and adjustable transmit power to adapt to most situations.



### Building to building Ethernet bridge

**WBB-5800** delivers several hundreds megabit per second bandwidth over license-free 5GHz radio link to connect buildings that can be offices, harbour, gas stations, factory and warehouses, parking lots, etc.

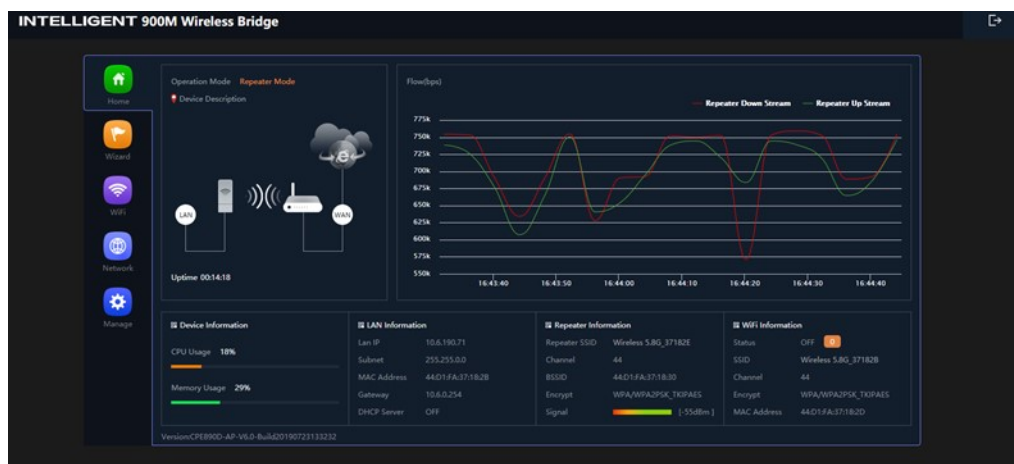
They support many features to secure the Ethernet link such as SSID, 802.1X authentication, AES128 encryption, VLAN, MAC filtering.



# Specifications

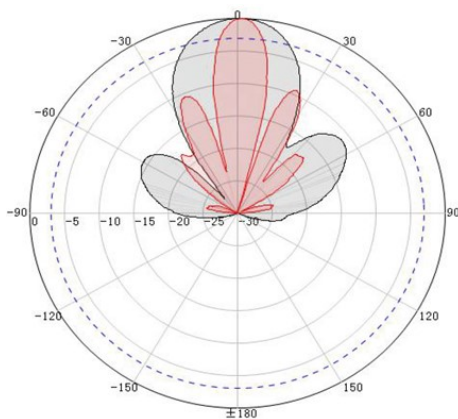
## Management

WBB-5800 are easy to install, operate and monitor. They provide a led display and push-buttons for hand-free installation. The web interface is very clear through intuitive menus and graphical design. The radio link and Ethernet communication is monitored with a complete set of information and graphics.



## Antenna

WBB-5800 embed a 60° directional and high gain 15/18 dBi MIMO antenna that provides long distance, stable radio signal and strong anti-interference capabilities. Radio channels can be defined automatically by the equipment or set through parameters to provide best speed, higher stability and lower latency.



CXR  
T +33 (0) 237 62 87 90  
[www.cxr.com](http://www.cxr.com)

Rue de l'Ornette 28410 Abondant France  
[contact@cxr.com](mailto:contact@cxr.com)

## Specifications

Radio	WBB-5880	WBB-5890
Frequency band	5.150 - 5.825 GHz	5.150 - 5.825 GHz
Bandwidth	300 Mbps	900 Mbps
Modulation	BPSK, QPSK, 16QAM, 64QAM	BPSK, QPSK, 16QAM, 64QAM, 256QAM
Channel width	5, 10, 20, 40 MHz	20, 40, 80 MHz
802.11 channels	36,40,44,48,52,56,60,64,100,104,108,112,116,132,136,140	36,40,44,48,100,104,108,112,116,132,136,140
Max transmit power	25 dBm, 5x transmit power settings	25 dBm, 5x transmit power settings
Max sensitivity	-90 dBm	-92 dBm
Modes of operation	Wireless bridge, AP, WDS, WISP	Wireless bridge, AP, WDS, WISP
Antenna	WBB-5880	WBB-5890
Gain	15 dBi	18 dBi
Bandwidth	300 Mbps	900 Mbps
Polarization & half power width	Vertical : H: 70° & V: 15° Horizontal: H: 50° & V: 15°	Vertical : H: 70° & V: 15° Horizontal: H: 50° & V: 15°
Ethernet	WBB-5880	WBB-5890
Ethernet ports	1x 10/100BaseT 1x 10/100BaseT 802.3at POE input	1x 10/100/1000BaseT 1x 10/100/1000BT 802.3at POE input
Security	WPA, AES128, 802.1X, WPS, MAC filtering, IP filter	WPA, AES128, 802.1X, WPS, MAC filtering, IP filter
VLAN	802.1Q, 4x SSID to VLAN mapping	802.1Q, 4x SSID to VLAN mapping
Other protocols	NAT, PPPoE, DHCP, DDNS, VPN Pass-through	NAT, PPPoE, DHCP, DDNS
Management	WBB-5880	WBB-5890
Protocols	Ssh, Https, Snmp v1/v2/v3	
Push buttons	3x setting and status push button, Reset	
Light indicators	Power, LAN, WAN, Signal strength, Radio	
Led display	Bridge status, channels, IP address, RF power	
Monitoring	Device status, radio status, event log	
Environment	WBB-5880	WBB-5890
Dimensions WxDxH	87x38x257 mm	87x38x257 mm
Weight	0.4 kg	0.4 kg
Power input	POE 24-48 Vdc, 12 Vdc power jack	POE 24-48 Vdc, 12 Vdc power jack
Power consumption	< 13 W	< 13 W
Material	Waterproof ABS	Waterproof ABS
Protection	IP53	IP53
Operating temperature	-40 to +60 °C	-40 to +60 °C
ESD protection	8/4 KV	8/4 KV
Surge protection	4 KV	4 KV
Accessories	POE injector, CAT5 cable, hose clamp	POE injector, CAT5 cable, hose clamp

## Ordering information

Reference	Description
WBB-5890	5GHz Ethernet bridge, 900Mbps total bandwidth



CXR  
T +33 (0) 237 62 87 90  
[www.cxr.com](http://www.cxr.com)

Rue de l'Ornette 28410 Abondant France  
[contact@cxr.com](mailto:contact@cxr.com)