

TS 324 & TS 1124

Characteristics

- 3 and 11 RS232 ports server to an Ethernet 10BT network
- Protocols: IP, ICMP, ARP, UDP, TCP, BOOTP, TELNET, Reserve Telnet, RLogin, LPD, HTTP, SNMP
- Radius Authentication and accounting
- RS232 interface : 300 to 115,200 BPS. RS232 signal control : DTR, CD, RTS, CTS, DSR
- Telnet RFC 2217 : full management of a remote serial port - data format, rate, and RS232 I/O signals
- MODBUS, JBUS
- Tested with Dial-IP™ software for MS Windows 95/98, NT, ME, 2000, XP.
- Easy migration of asynchronous links to the IP network

RS232 PORT AND TERMINAL SERVER



For the integration of your existing asynchronous applications into the TCP-IP local area network, CXR provides a range of asynchronous port and terminal servers :

- ◇ **TS 324: 3 RS232 ports,**
- ◇ **TS 1124: 11 RS232 ports.**

The TS324 server is a compact and cost effective solution to integrate any equipment with an asynchronous interface into the Ethernet 10BT network.

Especially for industrial application is the TSx24 equipped with an internal 48 Vdc converter. These servers can also fit in a 19 inch bay.

The TS1124 version is especially made for the concentration of low rate industrial applications (11 RS232 ports).

The RS232 ports of the TSx24 can connect any kind of asynchronous equipment's : modem, fax, alarm systems, VT100 terminals, payment terminal, point of sale terminal, industrial machines ...

The TS324 is an efficient and cost effective solution for the migration to the IP network of asynchronous links such as analog lease lines, public switch links, point to point RS232 connections, multipoint connection through multiplexers, ...

TSx24 are at once, Telnet server to answer requests from the IP network, and Telnet

client to start a link to an IP host from an RS232 port activation, i.e. data or DTR / RTS signal.

Thanks to the RFC2217 support the TS324 provides the PC's with extra COM ports (for example COM3:). Through a com port driver software such as Dial-IP™ the PC and its comm. Software can drive the TS324 ports as if they were inside the PC.

TS324 and TS1124 are also adapted to the migration of in place asynchronous applications into the IP network : they provide very unique features such as the simulation of half duplex modems, the transport of asynchronous packet protocols, raw TCP transparent link, ...

TSx24 provide many configuration and management features for an easy use. Configuration is accessed one RS232 port or through a telnet session with user friendly VT100 menus. Even easier it can be set through an http session from any Internet browser software.

The TSx24 units can get automatically an IP address when they connect on the network from any BOOTP server.

The TSx24 also provide the SNMP protocol for their management from and sending of TRAP messages to a network manager.

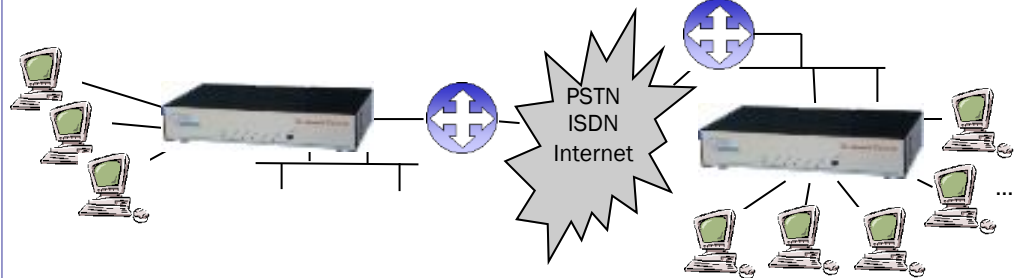
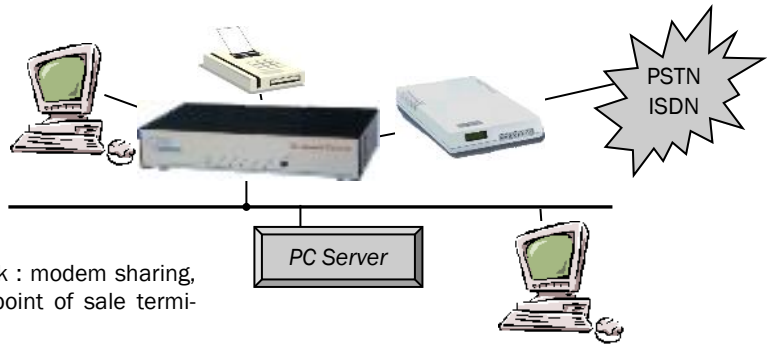
Both TSx24 are equipped with Flash Eprom memories which guaranty the investment and allow further firmware add-on to satisfy any special needs.

RS232 Port and Terminal server



Rear View
TS324 TS1124

The three ports of the TS324 connect various applications on a single point of the local network : modem sharing, VT100 terminals, point of sale terminal, machines...



The TS324 is perfectly intergrated into the TCP-IP network and provides interconnection of RS232 equipments through a local network or Internet.
The TS1124 concentrates up to 11 ports. Both TS324 and TS1124 are available as robust standalone cases. One or two servers can fit into a stacker for a 19 inches bay integration.

Smart Solutions for
Smart Networks

www.cxr.com

TECHNICAL CHARACTERISTICS

- Ethernet port : 10BT, 802.3, 8 pin RJ45 socket
- Protocols : IP, ICMP, ARP, TCP, BOOTP, TELNET, RLogin, LPD, FTP, HTTP, SNMP
- Security radius
- RS232 ports :
 - 8 pin RJ45 socket
 - signals : TD, RD, RTS, CTS, DTR, DSR, CD, GND
 - Data format : 7 or 8 bits, with or without parity, 1 or 2 stop bits
 - Data rates : 300 to 115,200 BPS
 - Flow control : RTS/CTS, Xon-Xoff
- Size : 185 (W) x 110 (D) x 36 (H) mm
- Management : first RS232 port, TELNET, HTTP, SNMP:
 - Configuration is password protected
- Internal firmware upgrade through an RS232 port or FTP
- Power supply :
 - External 110 / 230 Vac – 50 / 60 Hz through wall mount adapter
 - Internal DC/DC converter : 48 Vdc (12 or 24 Vdc on demand)
 - Power consumption : 3 W
- Rear panel : 3 or 11 RS232 ports (8 pin RJ45 sockets), power supply inputs, Ethernet port
- Front panel : 6 LED (power, link, activity, TD, RD, control) and one push button
- Operating temperature : 0 to 45 °C
- Weight TS1124: 730g
TS324: 670g
Alimentation: 110g

RANGE OF PRODUCTS

- TS 324 MV** : 3 port server, with external AC power supply adapter
- TS 324 MC** : 3 port server, with internal 48 Vdc power supply converter
- TS 1124 MV** : 3 port server, with external AC power supply adapter
- TS 1124 MC** : 3 port server, with internal 48 Vdc power supply converter
- TS-Rack-Kit** : to fit one or two TSx24 into a 19 inches bay
- RJ45 to DB25 and DB9 adapter for all DTE and DCE type interconnection on request

CXR reserves its rights to modify the specifications without notice. This document is not a contractual document.



CXR Anderson Jacobson
Rue de l'Ornette
28410 Abondant - France

T +33 (0) 237 62 87 90
F +33 (0) 237 62 88 01
email: contact@cxr.com