



# HX9400R-2CB-2GSF 4 GGeoSDH Card

*Applicable to HX9400R-CC16*

## Features

- Hot pluggable interface card for HX9400R-CC16
- Software configurable
- Four GbE Ports
  - Two combo Gigabit Ethernet(GbE) with 2 RJ45 and 2 SFP housing
  - Two Combo 10/100/1000 Base-TX or 100/1000 Base-FX
  - Supports GFP-F with layer 2 switch
    - Ethernet Function
      - 802.1q VLAN
      - 802.1d bridging with MAC learning ( up to 16K entries)
    - CoS/QoS
      - 8 priority queue
      - Packet classification based on the 802.1p priority or DSCP (DiffServ).
      - Strictly Priority or Weighted Round-Robin (WRR)
    - Rate limiting
      - Per port rate limiting
      - 2-rate-3-color per flow rate limiting
- Mapping: N x VC12, N x VC3, or N x VC4
- Max. backplane bandwidth: 2.5G
- Jumbo Frame reach up to 9600 bytes
- Processing Protocols: VCAT, GFP, LAPS, BCP, LCAS, and non-LCAS
- L2 switch protocol: RSTP, VLAN, Flow control, MSTP\*, IGMP snooping, QoS
- RoHS compliant

(\* Future Option)

## Description

The 4 GGeoSDH Interface Card with an L2 switch is software configurable plug-in card for the CXR HX9400R-CC16 device. The card provides 4 GbE with 2 combo plus 2 optical ports. For the SDH side, the card supports GFP-F. With L2 switch support, the function covers VLAN, MAC learning, CoS/QoS and Rate limiting.

The card is hot-swappable and can be installed or removed from a CXR-HX9400R chassis when the CXR device is powered up.



## Ordering Information

Model (RoHS compliant)	Description	Notes
HX9400R-2CB-2GSF	4 GbE card with 2 combo and 2 optical (10/100/1000BaseT) interface plug-in module with L2 switch	Available on HX9400RA-6U chassis tributary slot 3 and 4 only with CC16 controller  SFP optical modules are not included. Please order SFP modules separately.  Order two for redundancy

## 4 GbEoSDH Card Specifications

[SFP Module Characteristics](#) (Please refer to SFP optical module brochure for detail)

### Combo Gigabit Ethernet(GbE) Interface

Number of Ports	2
Speed	10/100/1000 Base-TX or 100/1000 Base-FX
Function	RJ45 Interface <ul style="list-style-type: none"> <li>10/100/1000 BaseT, auto-negotiation</li> <li>Auto MDI/MDIX</li> <li>Force mode: duplex (half/full), speed (10/100/1000M)</li> </ul>
	SFP Housing <ul style="list-style-type: none"> <li>Rx power low alarm</li> </ul>
Connector	RJ45 for twisted pair GbE, LC for optical GbE, auto detection

### Gigabit Ethernet (GbE) Interface

Number of Port	2
Speed	Speed 100/1000 Base-FX
Function	Rx power low alarm
Connector	LC for optical GbE

### Gigabit Ethernet Function

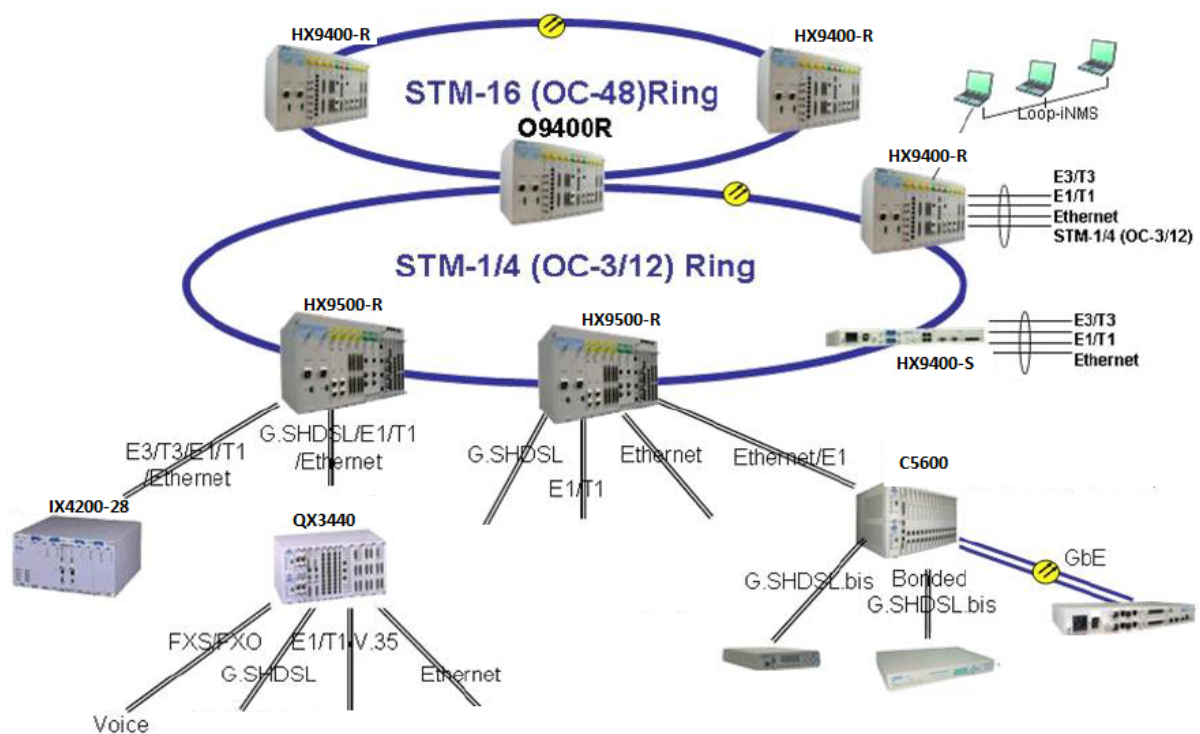
Line Rate	10/100/1000 Mbps	Mapping	N x VC12, N x VC3, or N x VC4
Layer2 Protocol	RSTP (802.1W), VLAN (802.1Q, 802.1P) Flow Control (802.3X) MSTP* (802.1S) IGMP Snooping QoS	Multiplexing	G.707
Process Protocol	VCAT, GFP(G.7041), LAPS, LCAS (G.7042) and non-LCAS		
Bridge	802.1d MAC learning (maximum MAC table 16K entry)		
VLAN	IEEE 802.1q bridging Supports tag stacking, up to 2 VLAN tags VLAN packet transparent		
QoS/CoS	Eight priority queues Packet classification based on the 802.1p user priority, IPV4 ToS (DiffServ) The scheduling algorithm of the priority queue follows either Strictly Priority or Weighted Round-Robin (WRR).		

### Standards Compliance

IEEE	802.1q, 802.1p, 802.3, 802.3u, 802.3ab, 802.3z, 802.1s, 802.1w, 802.1x G.7041, G.7042
------	--

(\* Future Option)

## Application Illustrations



### CXR Anderson Jacobson

Rue de l'Ornette - 28410 Abondant - FRANCE

Tel : + 33 2.37.62.88.00 - Fax : +33 2.37.62.88.01

Site WEB : <http://www.cxr.com>

Sales : [contact@cxr.com](mailto:contact@cxr.com)

Support: [support@cxr.fr](mailto:support@cxr.fr) Tél: +332.37.62.88.04