

FOCMD-I-TGIPS SERIES

**10/100/1000BASE-T TO 1000BASE-X GIGABIT ETHERNET
MANAGEMENT MEDIA CONVERTER WITH BUILT-IN
IEEE802.3AT/AF/POE/PSE FEATURE AND EXTENDED
OPERATING TEMPERATURE**



SNMP MANAGED

LINK ALARM

POWER DOWN Trap

POE

WIDE TEMPERATURE

POWER REDUNDANCY

9K BYTES JUMBO FRAMES

Description

CXR FOCMD-I series media converter are Gigabit Ethernet 10/100/1000Base-T to 1000Base-T media converter which is designed to fulfill the emerging deployment needs of fiber Ethernet network for operators and service providers with SNMP managed functionality.

When **FOCMD-I** is deployed at customer premises, the media converter can be fully managed by the network equipment in the Central Office site by popular SNMP based network management server (NMS). By leveraging the benefits of CXR unique SNMP based power-down trap feature, the FOCMD-I is able to send SNMP based trap message to NMS immediately when detects power failure on converter at customer site. It can significantly reduce truck rolls and the operational cost (OPEX) for operators or service providers.

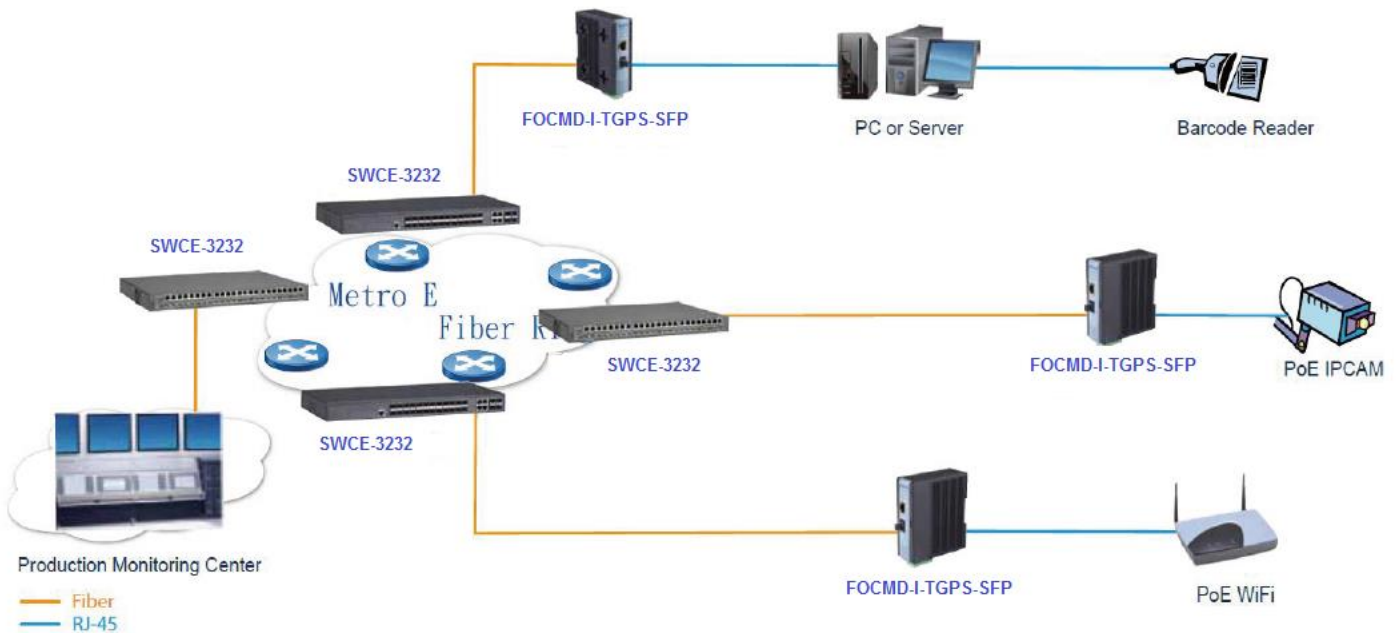
The flexible power options that **FOCMD-I** provides have either DC power or AC/DC power adaptor to fulfill most of practical deployment scenarios. The extended operating temperature of **FOCMD-I** media converter is from -20°C to 60°C which enables users to install the equipment under critical environment without reliable and stable concerns. It is especially designed for network operators, Metro Ethernet providers, enterprise, SMB customer segment, who have the need of implementing fiber optical Ethernet networks over long distance for FTTx solutions with the demand of wide operating temperature, and are looking for an effortless and robust 1000Mbps media converter.

FOCMD-I series media converter is fully compliant with IEEE802.3, 802.3u, 802.3ab, 802.3z, 802.3at/af standards. Besides, it is equipped with some switching features including flow control and Store-and-Forward. Additionally, Link Alarm feature enables the administrator to monitor the fiber link status in visually and intuitively mechanism.

Target Applications

SNMP managed Gigabit Ethernet media converter for point to point fiber connection which requires reliable and stable link under critical environmental condition of general industrial application.

Application Diagram



Specification

Interface

TP Port
 -10/100/1000Base-TX RJ-45 x 1
 F/O Port
 -1000Base-FX x 1

Standards

IEEE802.3 10Base-T
 IEEE802.3u 100Base-TX/FX
 IEEE802.3ab 1000Base-T
 IEEE802.3z 1000Base-X
 IEEE802.3x Flow Control
 IEEE802.3af Power over Ethernet
 IEEE802.3at Power over Ethernet Enhancements

LED

PW ADC, PW T1, PW T2, TP Link/ACT, Speed, FDX,
 F/O Link/ACT, PWR/Port Status, PoE

H/W Specification

Auto-Negotiation in TX port
 MDI/MDIX Auto-Crossover Supported
 Support Link Alarm
 1K MAC Address Table
 32K bytes Memory Buffer

Ethernet Feature

Support 9K Bytes Jumbo Frames
 Support Flow Control
 Wire Speed Store-And-Forward Switching
 Mechanism

Network Management

Web, SNMP
 DHCP Client
 Power Down Trap
 HTTP firmware Upgrade

Other Feature

DIP Switch Configuration
 Reset-To-Default Push Button

Installation Type

Wall Mounting
 Din-Rail Mounting

Power Requirement

DC Input :
 -DC Power Jack x 1
 -Terminal Block x 2
 -Input Voltage : 48VDC

Power Consumption

DC 48V Input : 38W (Max)

Environmental Condition

Operation : -20°C ~ 60°C
 Storage Temperature: -20°C ~ 70°C
 Humidity: 5% ~ 90%, Non-Condensing

Dimension & Weight

Size: 35 x 93 x 105 mm (WxDxH)
 Weight: 0.4Kg

EMC/Safety

FCC part 15 Class A, CE

Product References

Reference	Gigabit Managed Media Converter
FOCMD-I-TGPS-GS	Industrial Managed media converters DIN rail format, 10/100/1000BT PoE PSE 802.3at 30W to1000SX multimode 850nm budget 15dB, distance 550 m, full duplex SC, -20 to+60°C,48VDC power supply input available on terminal block and jack J25. plastic housing, power consumption 40W. Management WEB, SNMP.
FOCMD-I-TGPS-GL10	Industrial Managed media converters DIN rail format, 10/100/1000BT PoE PSE 802.3at 30W to1000LX singlemode 1310nm budget 10.5dB, distance 10km, full duplex SC, -20 to+60°C,48VDC power supply input available on terminal block and jack J25. plastic housing, power consumption 40W. Management WEB, SNMP.
FOCMD-I-TGPS-GL30	Industrial Managed media converters DIN rail format, 10/100/1000BT PoE PSE 802.3at 30W to1000LX singlemode 1310nm , distance 30km, full duplex SC, -20 to+60°C,48VDC power supply input available on terminal block and jack J25. plastic housing, power consumption 40W. Management WEB, SNMP.
FOCMD-I-TGPS-GL80	Industrial Managed media converters DIN rail format, 10/100/1000BT PoE PSE 802.3at 30W to1000LX singlemode 1310nm , distance 80km, full duplex SC, -20 to+60°C,48VDC power supply input available on terminal block and jack J25. plastic housing, power consumption 40W. Management WEB, SNMP.
FOCMD-I-TGPS-SFP	Industrial Managed media converters DIN rail format, 10/100/1000BT PoE PSE 802.3at 30W to1000SX/LX w/o SFP module, -20 to+60°C,48VDC power supply input available on terminal block and jack J25. plastic housing, power consumption 40W. Management WEB, SNMP.



CXR
T +33 (0) 237 62 87 90
www.cxr.com

17 Rue de l'Ornette 28410 Abondant France
contact@cxr.com