

CXRVIEW / CXRAJ VIEW

Feature

- GUI (Graphical User Interface)
- Runs on PC/Windows operating system
- Multiple levels of login security
- Fully supports all SNMP v1 functions including commands, alarms, and statistics gathering
- Single and multiple graphic windows presentation of devices, statistics, and map
- Scalable to 1,000 network elements
- Groups network elements into hierarchy
- Manual or auto-detect of network elements
- Multiple color display of alarm severity level (loss of power results in an alarm)
- Client /Server architecture
- Network Topology map with link between NEs (Trunk Management)
- Customer Management
- SNMP port number user configurable
- Alarm trap port number user configurable
- User login/logout history
- Node Connection status and statistics

List of devices managed by CXRAJView 2.50

- CFIP, TS224
- CV, MX200
- CopperLan
- SerialLan
- CopperWay/BIS/SW/2TTX/HV
- MD4000
- CV8000, FOE1
- CVFOE3T3
- SpeederLanBis
- CIP4ALL/2E1T1
- CIP-SERIAL
- SPEEDERLANBisGE
- CWBIS-GE (under dev)

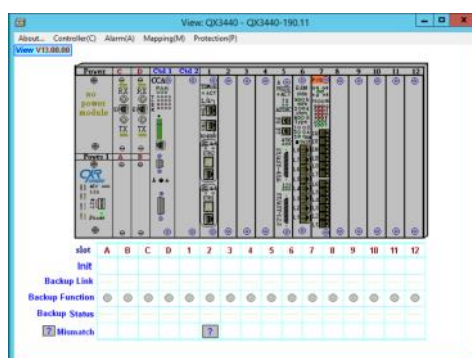
DESCRIPTION

The CXRView Element Network Management System is a software solution that provides a GUI (graphical user interface) for the management of a communication network containing CXR products.

CXRView runs on Windows based PC computer making it a cost effective and easy to use platform for managing up to 1,000 network elements.

The workforce management is facilitated by the multiple levels of login security, which provides the network manager great flexibility of work assignment. The hierarchical grouping feature - cities, buildings, and rooms - allows rapid access to the desired network element. Automatic detection of network elements and automatic creation of the network map makes easy installation procedure. CXRView covers the facilities for graphical configuration based on SNMP exchange. All SNMP v1 v2 and v3 functions are available in CXRView. This includes the execution of all commands, the gathering of all statistics, and the display of all alarm conditions in real time.

The map and the reports can be printed as well as viewed directly.



ORDERING INFORMATION

To order specify:

Model
CXRView

Description

Licence of graphic management (icon and front panel) based on SNMPC-WG or ENT. CXRAJView is include with CXRView. 1 licence per SNMPC server.

Note: SNMPC is not include with CXRView

Castle Rock is the trade mark of Castle Rock Computing.

Element Management Systems

SPECIFICATIONS

System Requirements

PC computer	Core i5 with SNMPc already installed
Memory	4 GB
Operating System	Windows7, 2K8, 2K12
Maximum devices	25,000 manageable devices
Login Security	3 levels - (1) Read only, (2) Network element commands, (3) Supervisor
Map creation	Automatic or manual node detection
SNMP support	Community strings, custom polling, MIB browsing
Displays	Multiple views of map, log files, alarms, and device display



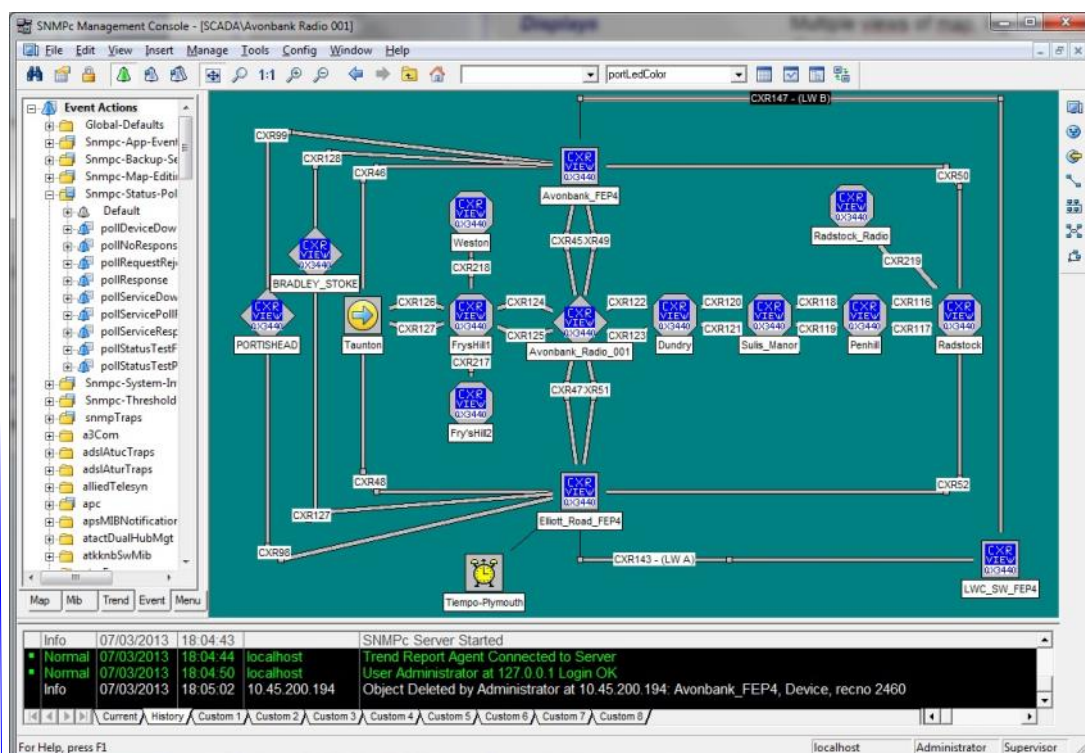
Smart Solutions for
Smart Networks

www.cxr.com



CXR Anderson Jacobson
Rue de l'Ornette
28410 Abondant - France

T +33 (0) 237 62 87 90
F +33 (0) 237 62 88 01
email: contact@cxr.com



MAP example : Displays of events in 6 levels of severity in multiple colors

The information contained in this document are provided without warranty and do not constitute a contractual document. In order to improve its products, CXR reserves its right to modify, without notice, any part of this document and the specification it contains.