



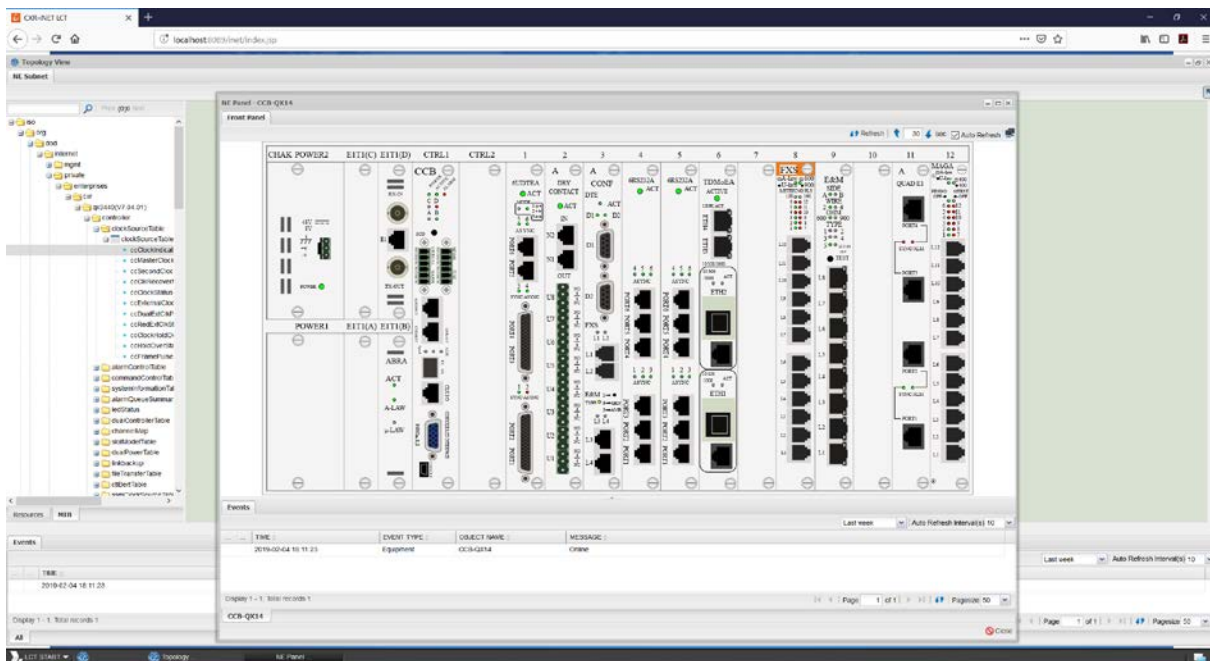
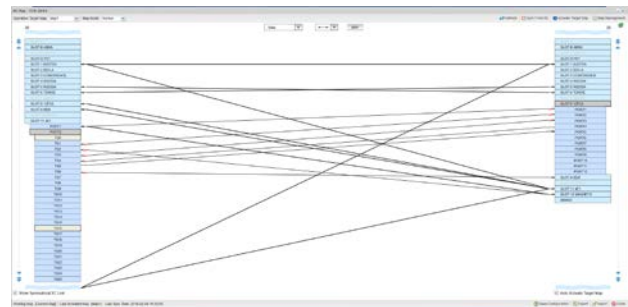
INET-LCT GRAPHICAL CONFIGURATION TOOL

Features

- Windows style user desktop environment
- Supported browsers: Firefox; Internet Explorer (IE)
- Supported server platform: MS Windows
- Database server: MySQL RDBMS
- SNMP based management system that supports SNMP functions including commands, alarms, and statistics gathering.
- Management of a Loop NE/ 3rd-party NE
- Support MIB compiled into the database
- Configuration upload/download
- Firmware download
- Currently Active Alarm Summary (CAAS)
- Graphical Cross-connect Tool (GXC)
- Diagnostics (BERT/Loopback Test) by port
- Trend Grapher (TG) for performance monitoring
- NE panel view with LED, alarm indication & GUI menu
- NE firmware/hardware version detection
- Working TSI map selection, status & management
- Cross-connect information export/import
- Cross-connect of data/voice type, frame/unframed, CAS ON/OFF
- Support Normal/SNCP/ULSR TSI mapping
- Support SNMP v1/v2c/v3

Description

CXR-iNET-LCT is based on CXR-iNET platform and provides a GUI user interface for equipment configuration and management. It supports NE panel view and allows MIB table setting. Moreover, the Graphical Cross Connections (GXC) tool is quite helpful in managing the cross connections on equipments. It is designed to manage equipments by using web browser. It allows you to access and perform operations and maintenance tasks with user friendly tools.



CXR-iNET-LCT Main Functions

- **Graphical Cross-connection Tool**
 - NE-Level Cross Connection Configuration
 - Provides equipment cross-connection creation/deletion/display views.
 - Supports Normal/SNCP/ULSR cross-connection types
- **Equipment Panel View**
 - Offers real-time LED status, alarm indication, visualized plug-in card information and GUI menu for configuration
- **File Transfer**
 - Configuration upload
 - Configuration/Firmware download
- **Trend Grapher**
 - Real-time data traffic monitoring
 - Trend report in simple and clear graphics
- **Diagnosis Management**
 - Graphical Loopback/BERT test tool
 - Port level diagnosis
- **Alarm Monitoring & Currently Active Alarm Summary(CAAS)**
 - Display Equipment CAAS by different severities
 - Real-time alarm monitoring for SNMP alarm traps

Third-party System Hardware

Note 1: Hardware system shall be provided by local SI or end-customer.

Note 2: This recommendation list below is the minimum system hardware requirement and it is for reference only. Please consult with a CXR representative for precise hardware spec and quantities.

■ **Hardware Specifications for CXR-iNET-LCT**

Item	Descriptions
Processor	Intel Xeon® 4 Core (2.4 GHz or above)
Memory	8GB or above
Hard disk	160GB/5400rpm or above
NIC	10/100/1000M
Resolution	1024*768 or above
Mouse	USB Wheel or Optical Mouse
Operating System	Windows Platform: Windows 2008 R2 Server Enterprise/ Windows 7 Professional, Enterprise, Ultimate (32 or 64 bit)/ Windows 2008 R2 Server Foundation/Standard and Windows 2012 R2 Server Foundation/Essentials/Standard, Windows 10 Professional
Monitor	21" LCD (1024*768) or above
Web Browser	Firefox 63 or above / Internet Explorer (IE11)

Third-party System Software

■ Third-Party Software / Open Source Software

Item	Type	Mandatory/ Optional	Description	Name	Remarks
1	Java Runtime Environment	M	One for each iNET-LCT	JDK	Version 6 or 7.
2	Web Server / Application Server	M	iNET can run on Apache Tomcat	Tomcat	Version 6 or 7
3	Database	M	Relational database management system	MySQL	MySQL Community Server version 5.5 or above
4	Java Messaging	M	JMS (Java Message Service) message broker	ActiveMQ	Version 5.4 or above
5	Web Browser	M	One browser for each iNET thin client	Firefox	Version 39~63
				IE	Version 11

INET-LCT Ordering Information

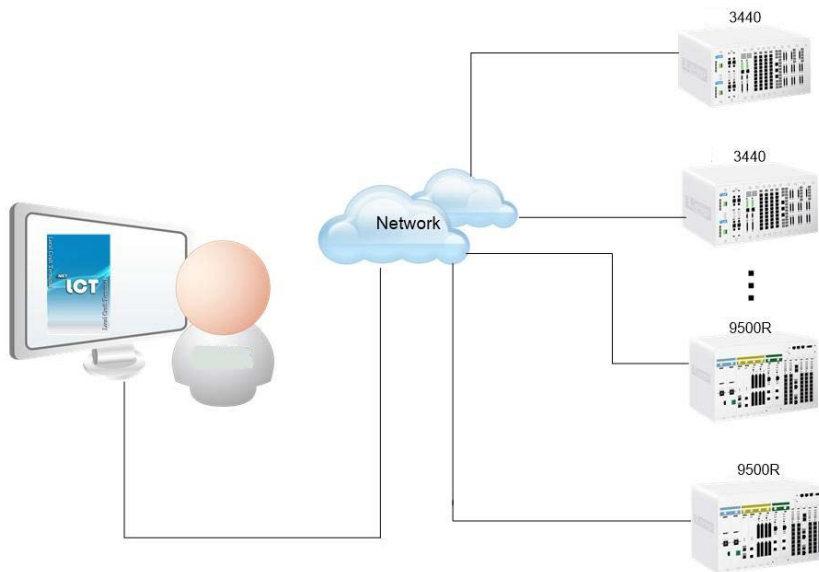
■ iNET-LCT Management License

Note 1: LCT software is free as long as the option on controller card is activated.

Note 2: Please make sure at least one controller has the LCT key activated.

iNET NE License (Devices List)	Description
QX3440-LCT	Feature Activation licence for QX3440 CPU card to support LCT Graphical Configuration Software. Licence based on serial number. Supports GUI graphic PDH/DS0 cross connect. Free Windows installation software.
HX9500R-LCT	Feature Activation licence for HX9500 CPU card to support LCT Graphical Configuration Software. Licence based on serial number. Supports GUI graphic PDH/DS0 cross connect. Free Windows installation software.)

Application Diagram



CXR-iNET-LCT is able to manage only one by one node.

Smart Solutions for Smart Networks

The information contained in this document is not contractual. CXR is evolving its products. Specifications may change without notice.