



# QX3440-LCT

## MAPPING SOFTWARE FOR QX3440

### Features

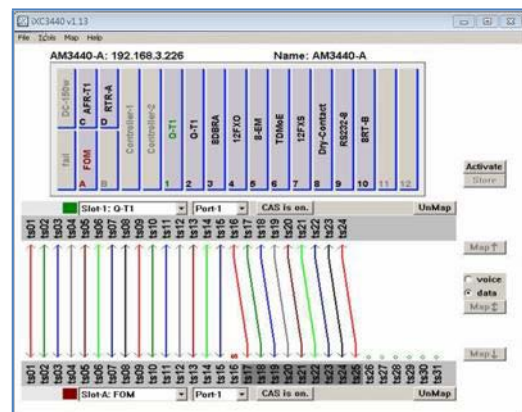
- Craft tool with graphical mapping
- Export and import of Maps
- Windows 2008R2, 7 , 8.1 and 10 compatible
- Supports SNMP v1/v3
- Visual highlight and click mapping
- Visually displayed links between feature cards
- Auto-selection of voice and data
- CAS ON/OFF with a mouse click
- Built-in TFTP server for configuration upload/download
- Supported mapping type: Normal/ULSR mapping.

### Specification

- QX3440-LCT works with all versions of the QX3440 versions
- QX3440-LCT requires a license for each QX3440 controller it supports.
- QX3440-LCT may be used by an unlimited number of technicians on an unlimited number of workstations

### Description

QX3440-LCT is simple, easy to use visual mapping software for the CXR QX3440 QX3440-S and QX3440-D multi-services cross connect platforms. By default, the QX3440 uses a VT100/telnet user console for card configuration, system configuration, mapping, etc. As more cards are added to the QX3440 platform, cross connecting (mapping) DS0s can become confusing and time consuming using the serial/telnet console. QX3440-LCT provides clarity using graphical representation, speeds up cross connect mapping and documentation.



### QX3440-LCT System Specification

#### Minimum System Requirements

Item	Descriptions
CPU	Minimum for adequate performance – Pentium or Celeron or AMD equivalent
Memory	Minimum 500 megabytes for best performance
Disk Space	5 megabytes
Screen	800 x 600 minimum
Mouse and Keyboard	Required
Operating System	QX3440-LCT operates with Microsoft Windows 7, 10 (32/64 bits), Windows 2008R2 and 2012 (64 bits).

## QX3440-LCT Ordering Information

To specify options, choose from the list below.

Feature Activation License	
QX3440-LCT	Feature Activation License for QX3440 CPU card to support QX3440 Craft GUI Mapping Tool.
<p><b>Note:</b></p> <ul style="list-style-type: none"> <li>Feature Activation License is required for each QX3440 that is managed by QX3440-LCT.</li> </ul>	
<b>Accessories</b>	
<b>User's Manual</b>	
QX3440-LCT-UM	User's Manual (paper copy). <b>Note:</b> A CD version of the manual is already included as standard package.

QX3440-LCT software covers most of QX3440 plug-in cards. Below is the list of cards currently supported by QX3440-LCT.

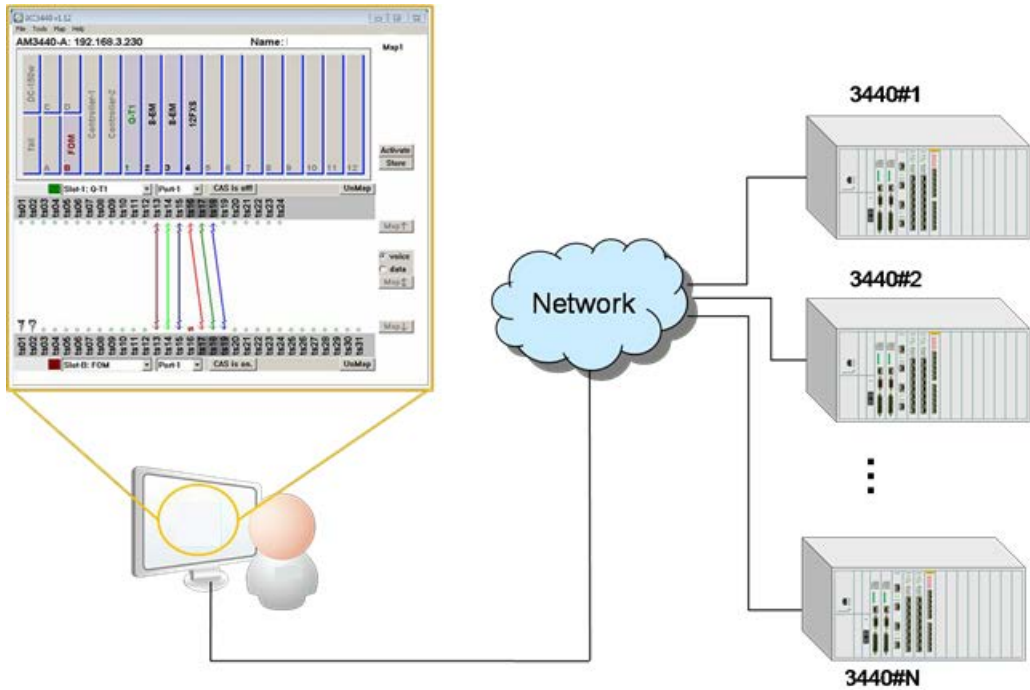
Mini Plug-in Module	Description	Note
E1	1-channel E1 plug-in card	
T1	1-channel T1 plug-in card	
MQE1	Mini Quad E1plug-in card	
RT	2-LAN ports/32 WAN port Router/Bridge plug-in card	
RTA	2-LAN ports/64 WAN port Router/Bridge plug-in card	
FOM	Mini Fiber Optical plug-in card	
TS	3-channel Terminal Server plug-in card	
Q2EM	Quad 2 wire E&M voice plug-in card	
Q4EM	Quad 4 wire E&M voice plug-in card	
QFXO	Quad FXO voice plug-in card	
QFXS	Quad FXS voice plug-in card	
1X21	1-channel X.21 plug-in card	
1RS232	1-channel RS232 plug-in card	
1V35	1-channel V.35 plug-in card	
1E530	1-channel EIA530 plug-in card	
1OCUDP	1-channel OCU-DP plug-in card	
ECA	Echo Cancellation plug-in card	
ABRA	Analog Bridge plug-in card	
M1C37	Mini 1-channel C37.94 plug-in card	

Single Slot Plug-in Module	Description	Note
8UDTEA	8-port universal data interface plug-in card	
3E1	3-channel E1 plug-in card	
TDMoE	TDMoE plug-in module	
QE1	4-channel E1 plug-in card	
QT1	4-channel T1 plug-in card	
2GH	2-channel G.SHDSL plug-in card	
4GH	4-channel G.SHDSL plug-in card	
8CD	8-channel G.703 plug-in card	
8DC	8-channel dry contact plug-in card	
1C37	1-channel C37.94 plug-in card	
4C37	4-channel C37.94 plug-in card	

<i>Single Slot Plug-in Module</i>	<b>Description</b>	<b>Note</b>
<b>OCUDP</b>	8-channel OCU-DP plug-in card	
<b>1FOM</b>	Fiber Optical plug-in card	
<b>8RS232</b>	8-port RS232 plug-in card	
<b>8DBRA</b>	8-channel data bridge plug-in card	
<b>RTB</b>	8-LAN ports/64 WAN ports router/bridge plug-in card	
<b>CONF</b>	Conference plug-in card	
<b>8EM</b>	8-channel 2W/4W E&M plug-in card	
<b>12FXS</b>	12-channel FXS plug-in card	
<b>12FXO</b>	12-channel FXO plug-in card	
<b>12MAG</b>	12-channel magneto plug-in card	
<b>V110</b>	6-channel V.110 plug-in card	

<i>Dual Slot Plug-in Module</i>	<b>Description</b>	<b>Note</b>
<b>6X21A</b>	6-channel X.21 plug-in card	
<b>6V35A</b>	6-channel V.35 plug-in card	
<b>6V36A</b>	6-channel V.36 plug-in card	
<b>6E530A</b>	6-channel EIA530 plug-in card	
<b>6RS449A</b>	6-channel RS449 plug-in card	

### ■ Application Diagram



Using the QX3440-LCT Mapping Software for QX3440 cross-connect mapping



CXR  
T +33 (0) 237 62 87 90  
www.cxr-networks.com

Rue de l'Orne e 28410 Abondant France  
contact@cxr.com  
www.cxr-wireless.com

Smart Solutions for Smart Networks