

# CXRVIEW / CXR AJ VIEW

## ELEMENT MANAGEMENT SYSTEMS

### FEATURE

### Description

GUI (Graphical User Interface)

Runs on PC/Windows operating system

Multiple levels of login security

Fully supports all SNMP v1 functions including commands, alarms, and statistics gathering

Single and multiple graphic windows presentation of devices, statistics, and map

Scaleable to 1,000 network elements

Groups network elements into hierarchy

Manual or auto-detect of network elements

Multiple color display of alarm severity level (loss of power results in an alarm)

Client /Server architecture

Network Topology map with link between NEs (Trunk Management)

Customer Management

SNMP port number user configurable

Alarm trap port number user configurable

User login logout history

Node Connection status and statistics

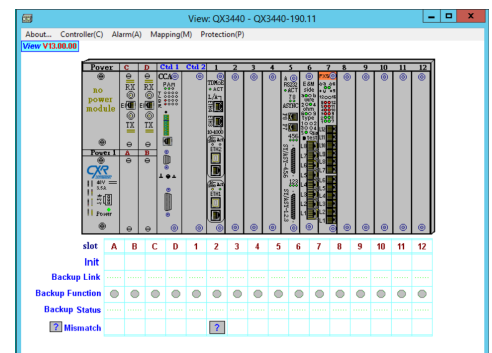
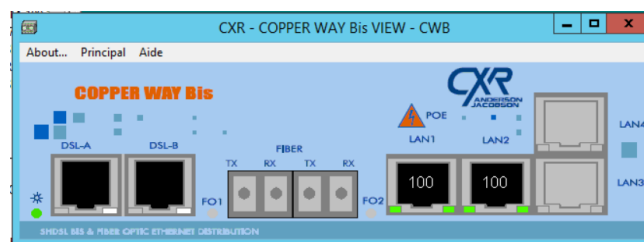
The CXRView Element Network Management System is a software solution that provides a GUI (graphical user interface) for the management of a communication network containing CXR products.

CXRView runs on Windows based PC computer making it a cost effective and easy to use platform for managing up to 1,000 network elements.

The workforce management is facilitated by the multiple levels of login security, which provides the network manager great flexibility of work assignment. The hierarchical grouping feature - cities, buildings, and rooms - allows rapid access to the desired network element. Automatic detection of network elements and automatic creation of the network map makes easy installation procedure. CXRView covers the facilities for graphical configuration based on SNMP exchange.

All SNMP v1 v2 and v3 functions are available in CXRView. This includes the execution of all commands, the gathering of all statistics, and the display of all alarm conditions in real time.

The map and the reports can be printed as well as viewed directly.



## Ordering information

To order specify:

**Model**                      **Description**

CXRView                      Licence of graphic management (icon and front panel) based on SNMPC-WG or ENT. CXRAJView is include with CXRVIEW. 1 licence per SNMPC server.

**Note:**                      SNMPC is not include with CXRVIEW

**Castle Rock** is the trade mark of Castle Rock Computing.



## List of devices managed by CXRAJView 2.50

- CFIP, TS224
- CV, MX200
- CopperLan
- SerialLan
- CopperWay/BIS/  
SW/2TTX/HV
- MD4000
- CV8000, FOE1
- CVFOE3T3
- SpeederLanBis
- CIP4ALL/2E1T1
- CIP-SERIAL
- SPEEDERLANBisGE
- CWBIS-GE (under dev)

## Specifications

### System Requirements

PC computer

Core i5 with SNMPc already installed

Memory

4 GB

Operating System

Windows7, 2K8, 2K12

Maximum devices

25,000 manageable devices

Login Security

3 levels - (1) Read only,  
(2) Network element commands, (3) Supervisor

Map creation

Automatic or manual node detection

SNMP support

Community strings, custom polling, MIB browsing

Displays

Multiple views of map, log files, alarms, and device display

The screenshot displays the SNMPc Management Console interface. The main window shows a network topology map with numerous nodes, each labeled with a device ID and 'CXR VIEW 0x3440'. The nodes are interconnected by lines representing network links. The map is titled 'Avonbank\_Radio\_001'. On the left side, there is a tree view for 'Event Actions' with various categories like 'Global-Defaults', 'Snmpc-App-Event', 'Snmpc-Backup-St', 'Snmpc-Map-Editi', 'Snmpc-Status-Pol', 'Default', 'pollDeviceDown', 'pollNoRespons', 'pollRequestRej', 'pollResponse', 'pollServiceDown', 'pollServicePoll', 'pollServiceResp', 'pollStatusTestP', 'pollStatusTestF', 'Snmpc-System-In', 'Snmpc-Threshold', 'snmpTraps', 'a3Com', 'adsIAtucTraps', 'adsIAturTraps', 'alliedTelesyn', 'apc', 'apsMIBNotificator', 'atactDualHubMgt', and 'atknbSwMib'. At the bottom, there is a log window showing system events such as 'SNMPc Server Started', 'Trend Report Agent Connected to Server', 'User Administrator at 127.0.0.1 Login OK', and 'Object Deleted by Administrator at 10.45.200.194: Avonbank\_FEP4, Device, recno 2460'. The status bar at the bottom indicates the user is logged in as 'Administrator' with 'Supervisor' privileges.

MAP example : Displays of events in 6 levels of severity in multiple colors



CXR  
T +33 (0) 237 62 87 90  
www.cxr.com

17 Rue de l'Ornette 28410 Abondant France  
contact@cxr.com

Smart Solutions for Smart Networks

The information contained in this document is not contractual. CXR is evolving its products. Specifications may change without notice.